



## Practical application of real time monitors

Peter Baldwin CMFOH  
Russell Atkinson LFOH  
Helen Beattie LFOH



# Real Time monitors

- Provide instant readings
- Log measurements for later analysis
- Multiple substances at once
- Issues
  - Cross sensitivity
  - Battery life
  - Accuracy/sensitivity

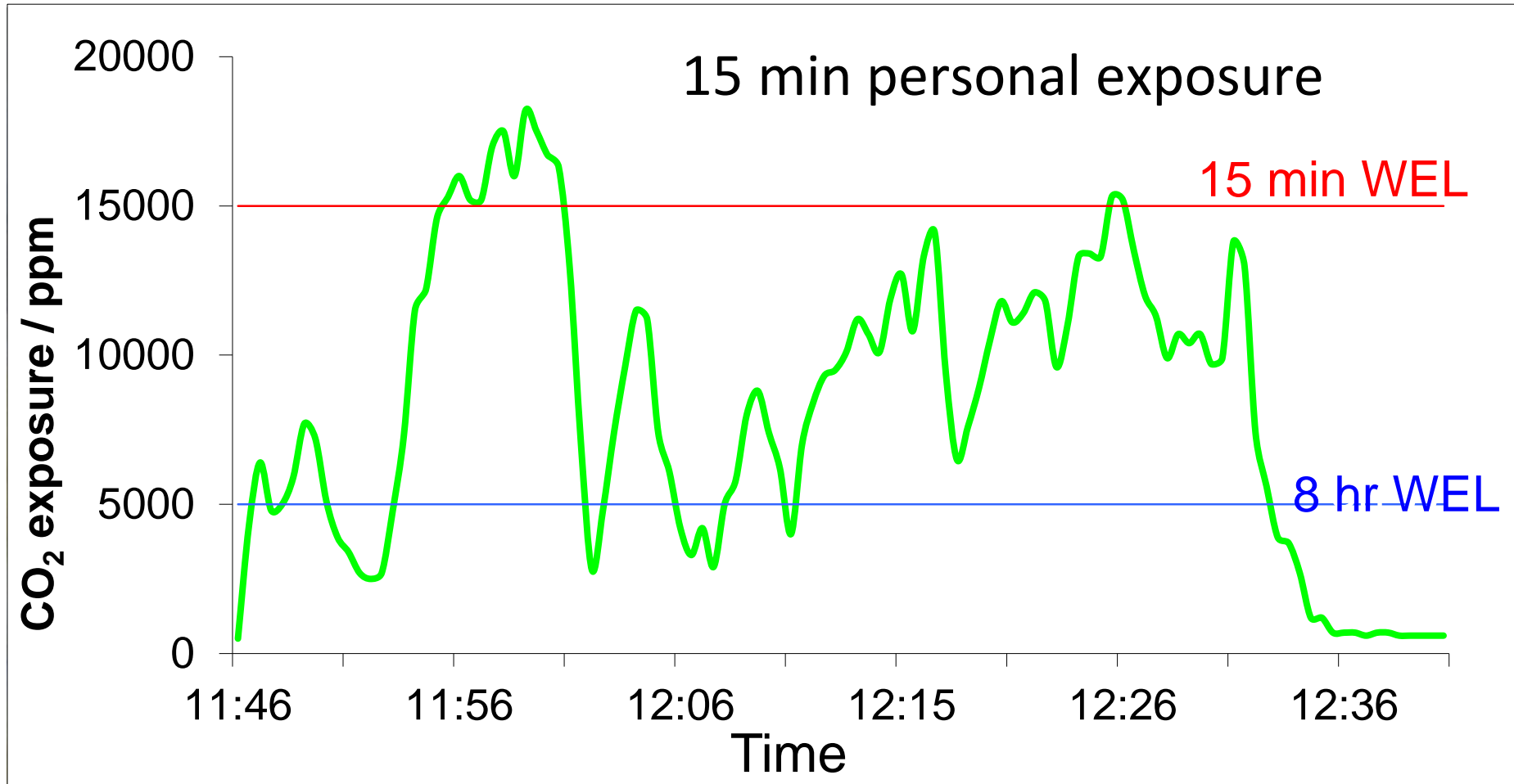


# Practical applications

- Dry Ice blasting – Task is 15 to 60 minutes
- Maggot farming – Task length 8 hours
- Indoor composting - Task is 24/7 (sampling 7 days)
- Exposure visualisation



# Dry Ice blasting 15 minute TWA exposure



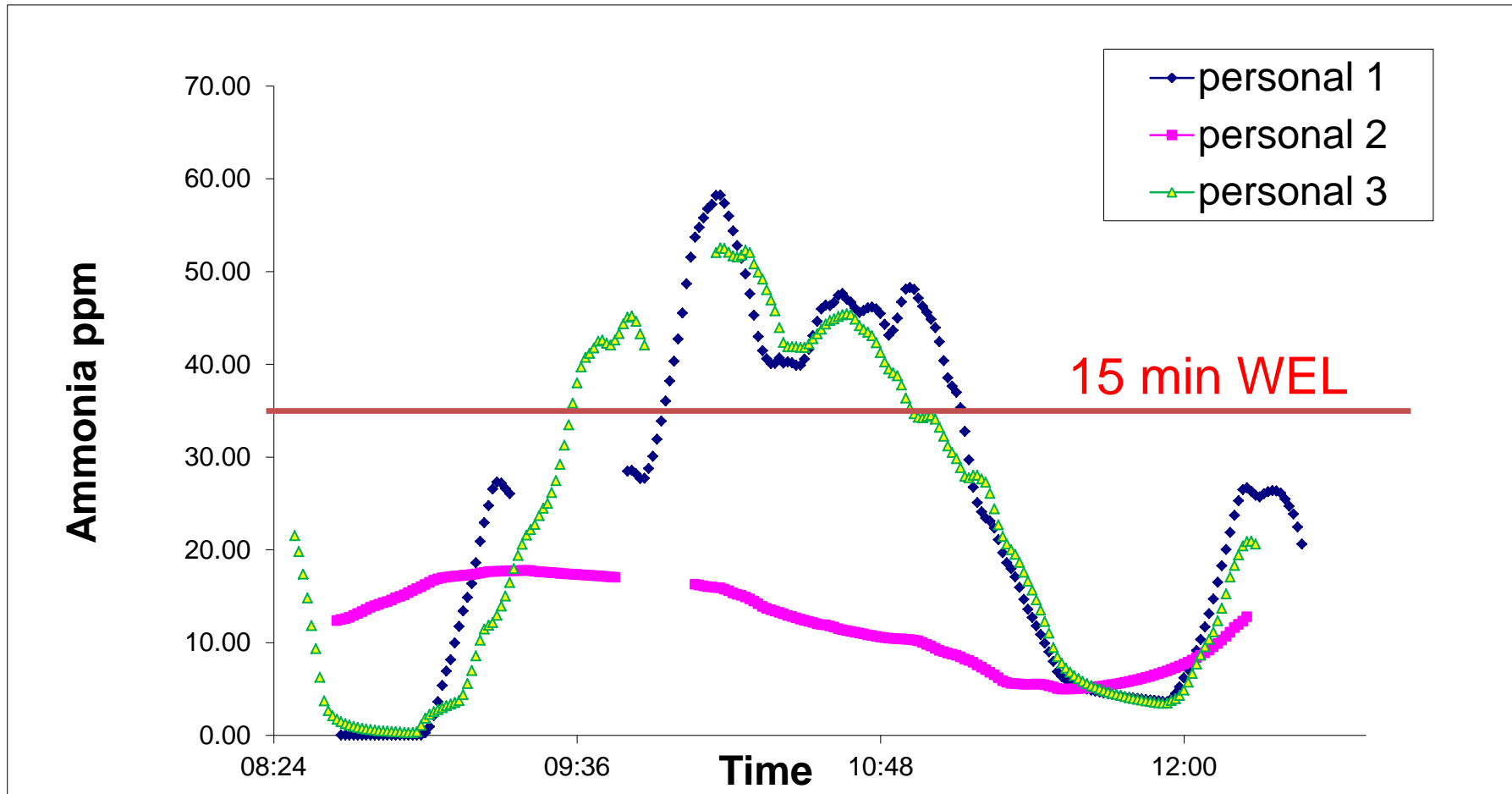


# Maggot farming – static sampling



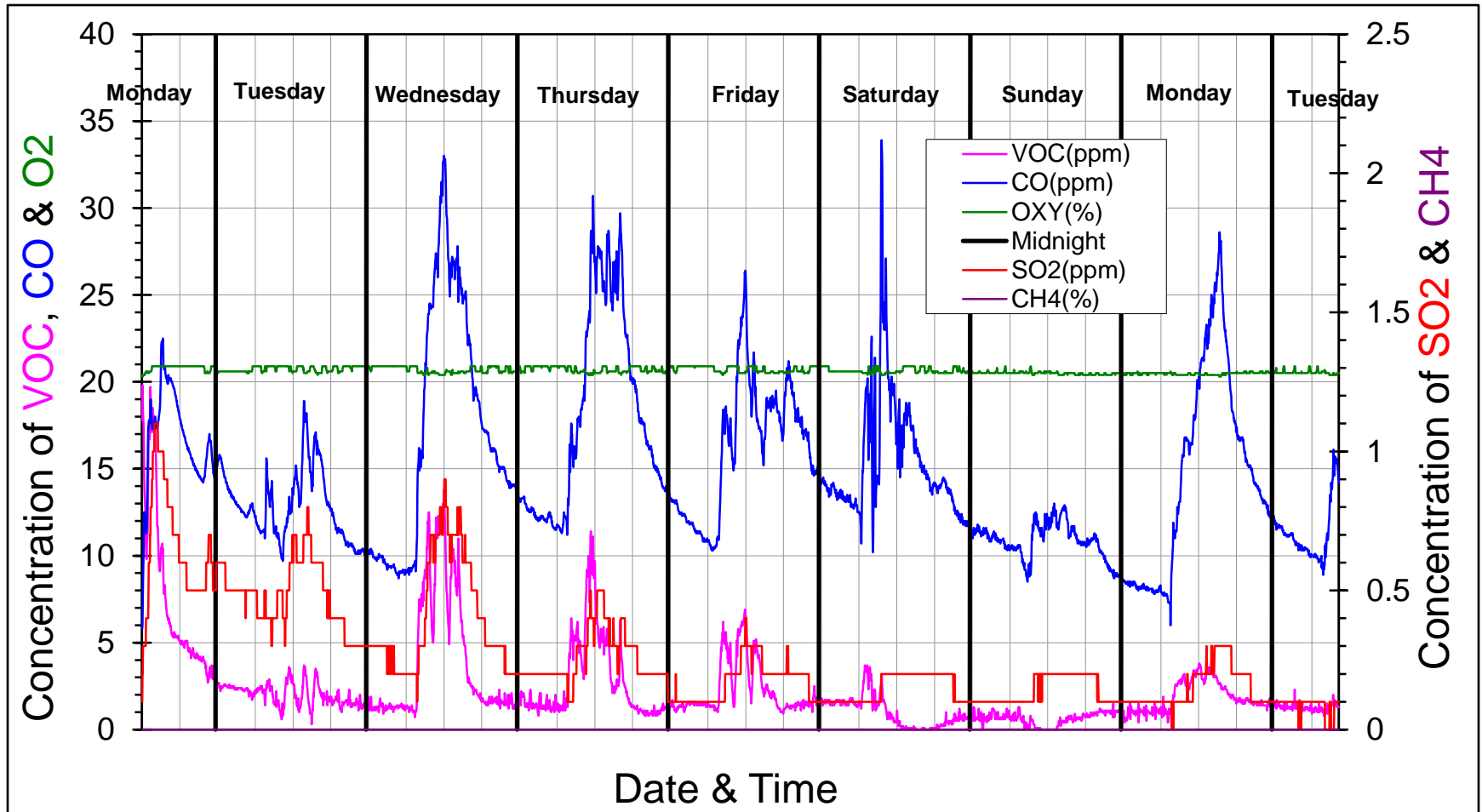


# Maggot Farm - 15 minute TWA exposure





# Composting





# Exposure visualisation and training



Sweeping Up





# Real time instruments - conclusions

- Instruments can fail
- Logging data enables later analysis
  - Cross sensitivity can be corrected
- Exposure knowledge:
  - Exposure pattern
  - Target exposure controls on high exposure tasks
- Worker training



# Any questions?



[peter.baldwin@hsl.gsi.gov.uk](mailto:peter.baldwin@hsl.gsi.gov.uk)